



# ORGANIZATIONAL CHART & TELEPHONE DIRECTORY

This directory is designed to:

1. Give users direct access to the Department's top-level management and supervisory personnel, and
2. To see where the managers and supervisors fit into the Department's chain-of-command structure.

FOR AUTOMATED INSPECTION REQUESTS ONLY,  
YOU MAY CALL TOLL FREE FROM ANYWHERE  
IN LOS ANGELES COUNTY:

**1-888-524-2845**

OR

OUTSIDE LOS ANGELES COUNTY

213-482-0000

TDD Line 888-833-8389

FOR ALL OTHER SERVICES OR INFORMATION WITHIN  
THE CITY OF LOS ANGELES

**3-1-1**

OR

OUTSIDE LOS ANGELES CITY

1-213-473-3231

*For more information regarding the Los Angeles Department of Building and Safety, please visit [www.ladbs.org](http://www.ladbs.org).*

# TELEPHONE DIRECTORY INDEX

## DEPARTMENT OF BUILDING AND SAFETY

Executive and Bureau Management .....	Chart 1
Government and Community Relations Division.....	Chart 2
Development Services Case Management Division	
Case Management.....	Chart 3
Preliminary Review.....	Chart 3
Personnel Services.....	Chart 4

## PERMIT AND ENGINEERING BUREAU

Permit and Engineering Bureau Management .....	Chart 5
Structural Plan Check Division	
Metro and ePlan Check .....	Chart 6
Van Nuys District Office .....	Chart 6
West LA District Office .....	Chart 6
High-Rise, Seismic Retrofit and LAX Projects Division	
Soft-Story Retrofit Program .....	Chart 7
High-Rise and Non-Ductile Concrete Buildings.....	Chart 7
LAX .....	Chart 7
Structural Plan Check Counter Division	
Metro Plan Check .....	Chart 8
South LA District Office .....	Chart 8
Van Nuys District Office .....	Chart 8
West LA District Office .....	Chart 8
San Pedro District Office.....	Chart 8
Concierge Services.....	Chart 8
Green/Electrical/Mechanical (GEM) Plan Check Division	
Green Building Plan Check / Inspection.....	Chart 9
Mechanical Plan Check and Test Lab .....	Chart 9
Electrical Plan Check and Test Lab .....	Chart 9

## INSPECTION BUREAU

Commercial Building Inspection .....	Chart 10
Elevator and Pressure Vessel.....	Chart 10
Commercial Inspection .....	Chart 11
Plumbing, Heating and Fire Sprinkler / Electrical	
Residential Inspection.....	Chart 12
Metro / Van Nuys / West LA / San Pedro	
Grading Engineering and Inspection.....	Chart 12
Training and Emergency Management Division .....	Chart 12

## CODE ENFORCEMENT BUREAU

Citywide Signs Code Enforcement .....	Chart 13
General Enforcement and Annual Inspection Monitoring.....	Chart 13
Citywide Pro-Active Code Enforcement.....	Chart 13
Citywide Vacant Building Abatement and Foreclosure Registry Program	Chart 13
Environmental Affairs Division, Local Enforcement Agency.....	Chart 14

## RESOURCE MANAGEMENT BUREAU

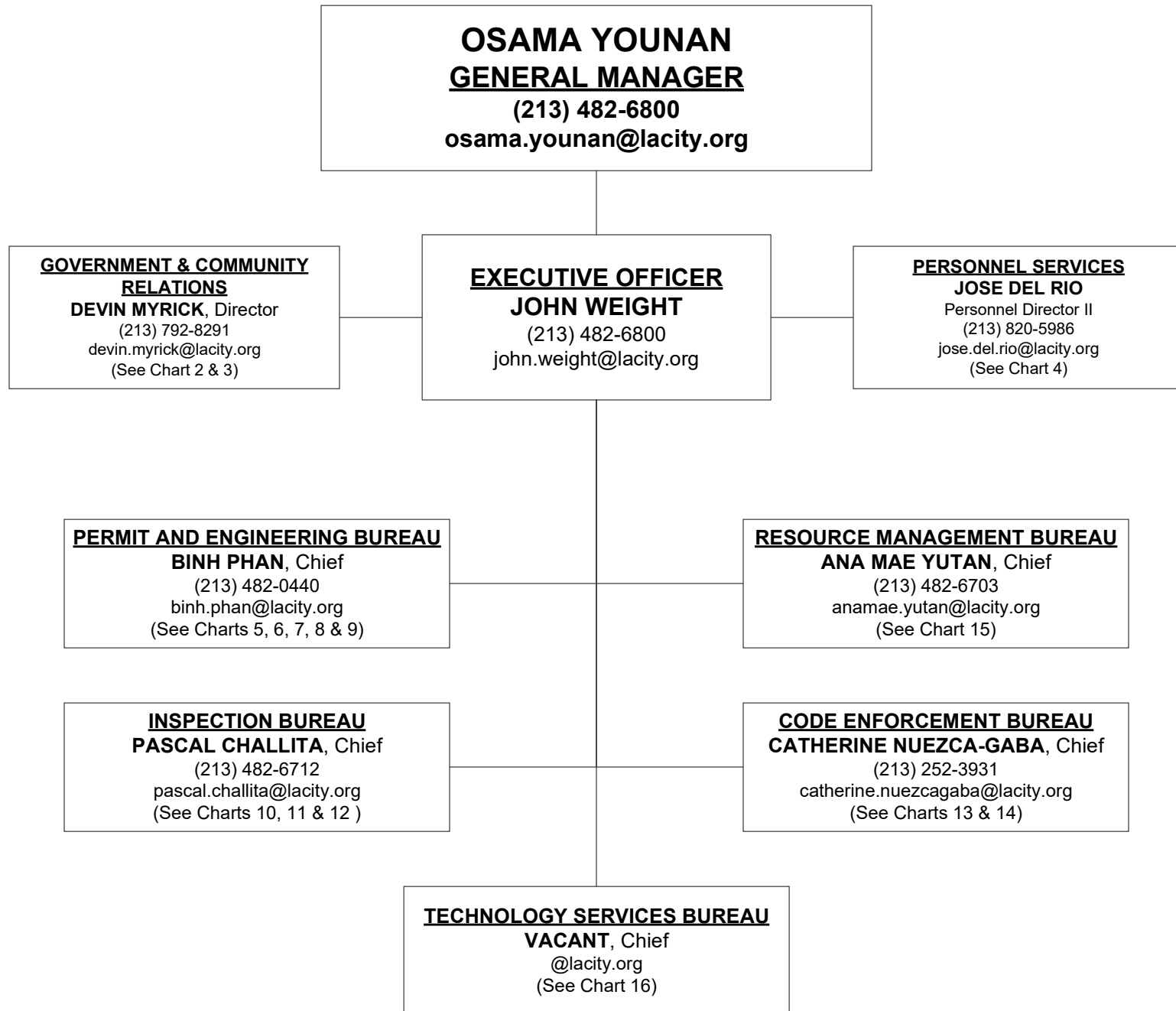
Budget and General Administrative Services Division .....	Chart 15
Contracts and Application Services Division.....	Chart 15
Records Management Division .....	Chart 15
Financial Services Division .....	Chart 15

## TECHNOLOGY SERVICES BUREAU

Customer Engagement Division .....	Chart 16
Application Services Division .....	Chart 16
Operations and Infrastructure Division.....	Chart 16
Administration Division .....	Chart 16

DEPARTMENT OF BUILDING AND SAFETY

Chart 1



**Chart 2**

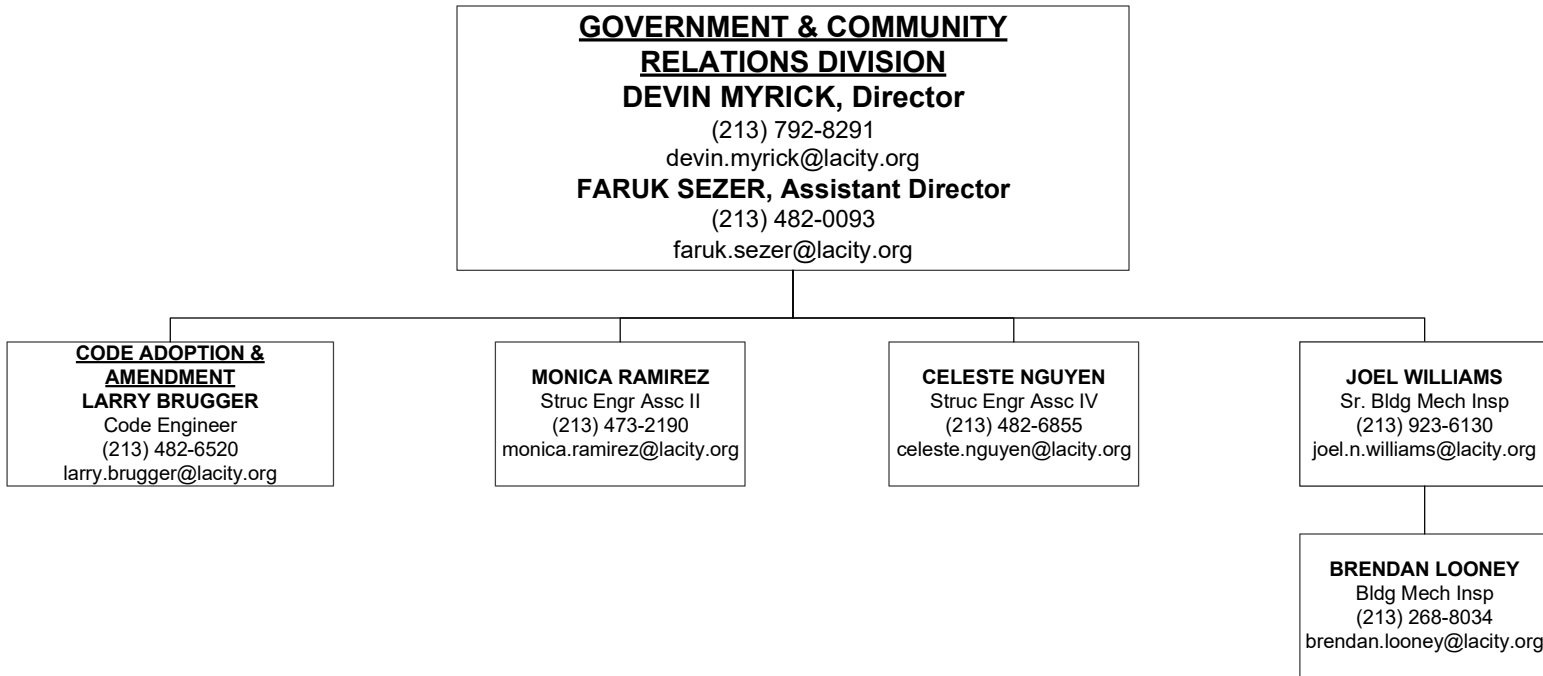
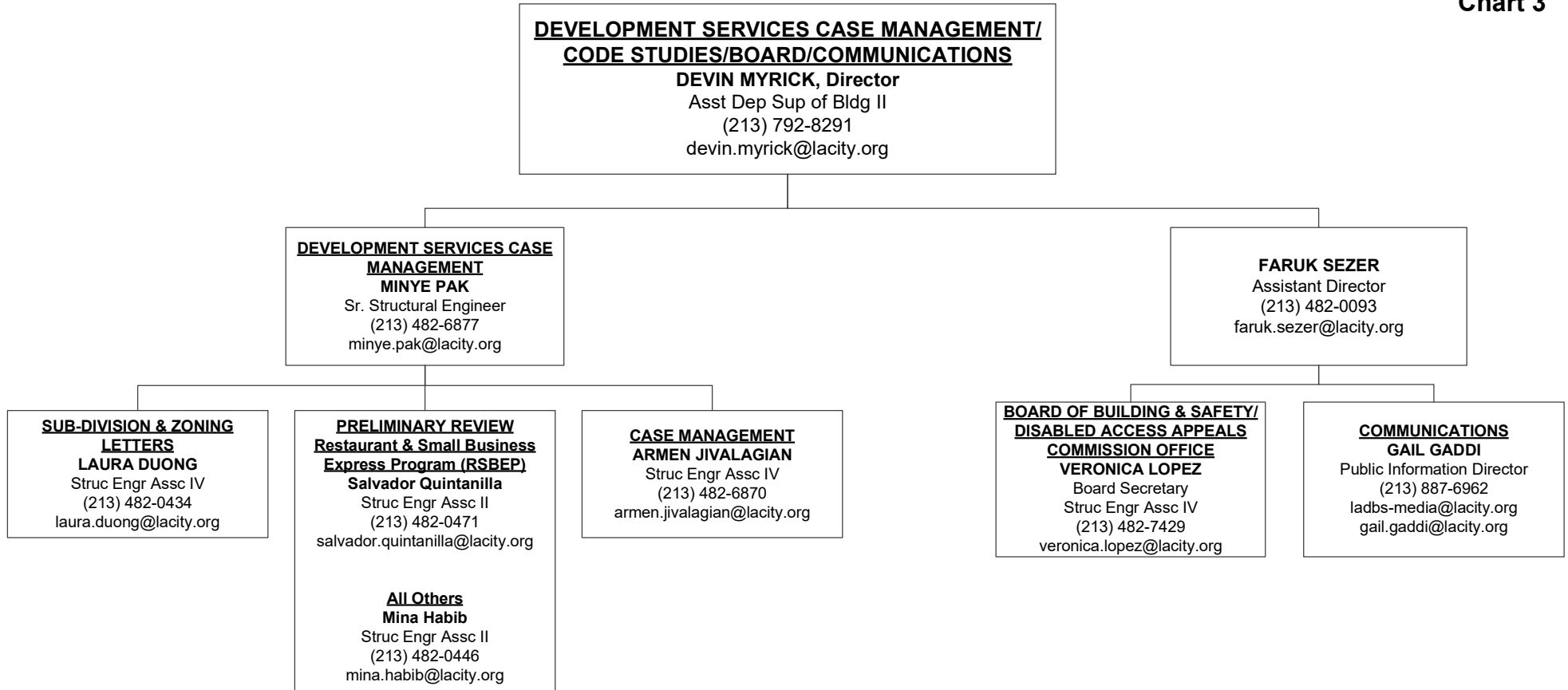
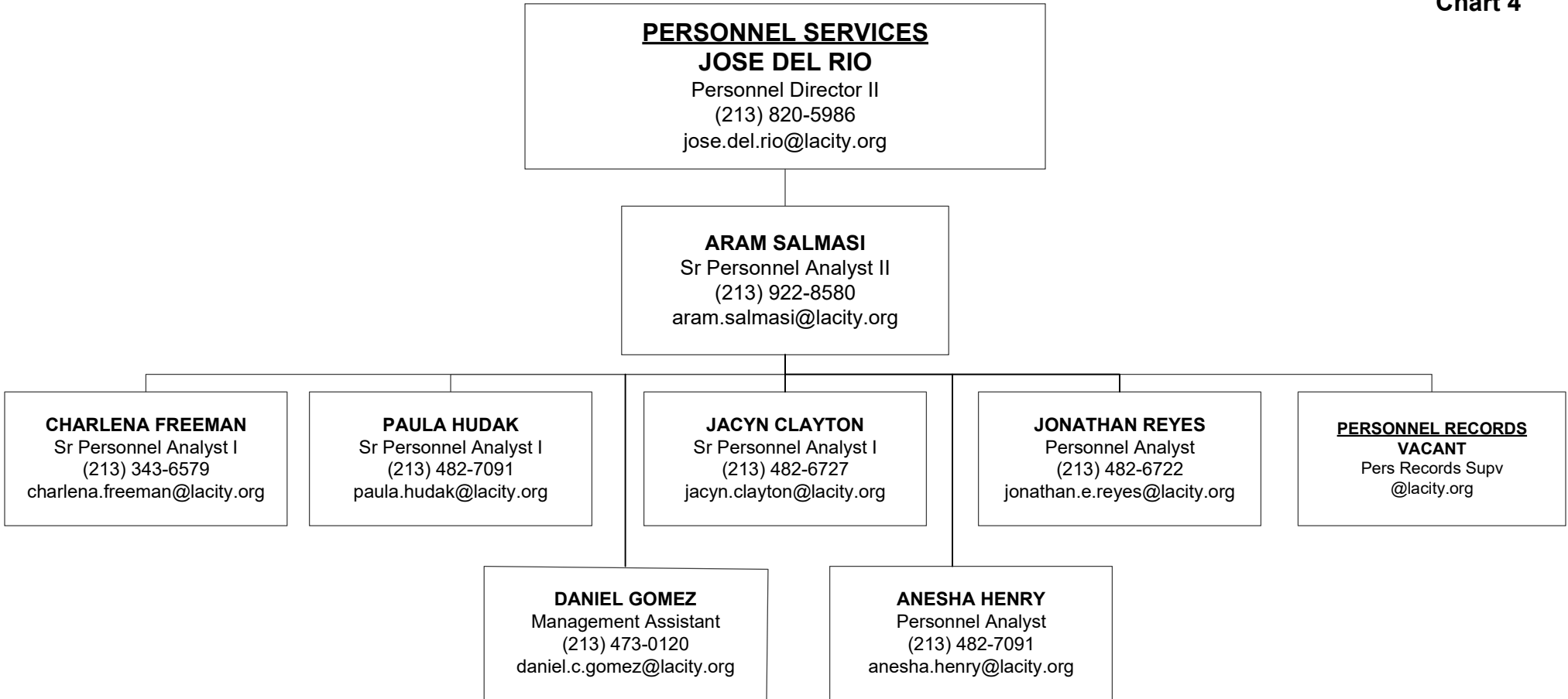


Chart 3



**Chart 4**



**PERMIT AND ENGINEERING BUREAU**  
**BINH PHAN, Chief**  
(213) 482-0440  
binh.phan@lacity.org

**GREEN/ELECTRICAL/  
MECHANICAL DIVISION**  
**ADEL SALAH EDDINE, Chief**  
Asst Dep Sup of Bldg II  
(213) 482-0053  
adel.salah-eddine@lacity.org  
See Chart 9

**STRUCTURAL PLAN CHECK  
DIVISION**  
**ALLEN MANALANSAN, Chief**  
Asst Dep Sup of Bldg II  
(213) 482-0463  
allen.manalansan@lacity.org  
See Chart 6

**HIGH-RISE, SEISMIC  
RETROFIT AND LAX  
PROJECTS DIVISION**  
**CHARMIE HUNYH, Chief**  
Asst Dep Sup of Bldg II  
(213) 482-0440  
charmie.huynh@lacity.org  
See Chart 7

**STRUCTURAL PLAN CHECK  
COUNTER DIVISION**  
**SHAHEN AKELYAN, Chief**  
Asst Dep Sup of Bldg II  
(213) 482-0440  
shahen.akelyan@lacity.org  
See Chart 8

Chart 6

**PERMIT AND ENGINEERING BUREAU**  
**BINH PHAN, Chief**  
(213) 482-0440  
binh.phan@lacity.org

**STRUCTURAL PLAN CHECK DIVISION**  
**ALLEN MANALANSAN, Chief**  
Asst Dep Sup of Bldg II  
(213) 482-0463  
allen.manalansan@lacity.org

**AFFORDABLE HOUSING SECTION/BUILDING RESEARCH**  
**EUGENE BARBEAU**  
Bldg Civil Engr II  
(213) 978-4454  
eugene.barbeau@lacity.org

**RUDY ARIAS**  
Bldg Civil Engr I  
(213) 202-9903  
rodolfo.arias@lacity.org

**METRO STRUCTURAL PLAN CHECK**  
**CHAD DOI**  
Bldg Civil Engr II  
(213) 482-0453  
chad.doi@lacity.org

**STRUCTURAL PLAN CHECK/ DISABLED ACCESS**  
**CAROLYNN NEPOMUCENO**  
Bldg Civil Engr I  
(323) 350-6792  
carolynn.nepomuceno@lacity.org

**VACANT**  
Bldg Civil Engr I  
@lacity.org

**METRO STRUCTURAL PLAN CHECK/ePLAN**  
**MICHAEL PEREZ**  
Bldg Civil Engr II  
(213) 482-0432  
michael.x.perez@lacity.org

**JOHN FRANCIA**  
Bldg Civil Engr I  
(213) 202-5406  
john.francia@lacity.org

**VAN NUYS STRUCTURAL PLAN CHECK**  
**JASON HEALEY**  
Bldg Civil Engr II  
(818) 374-4373  
jason.healey@lacity.org

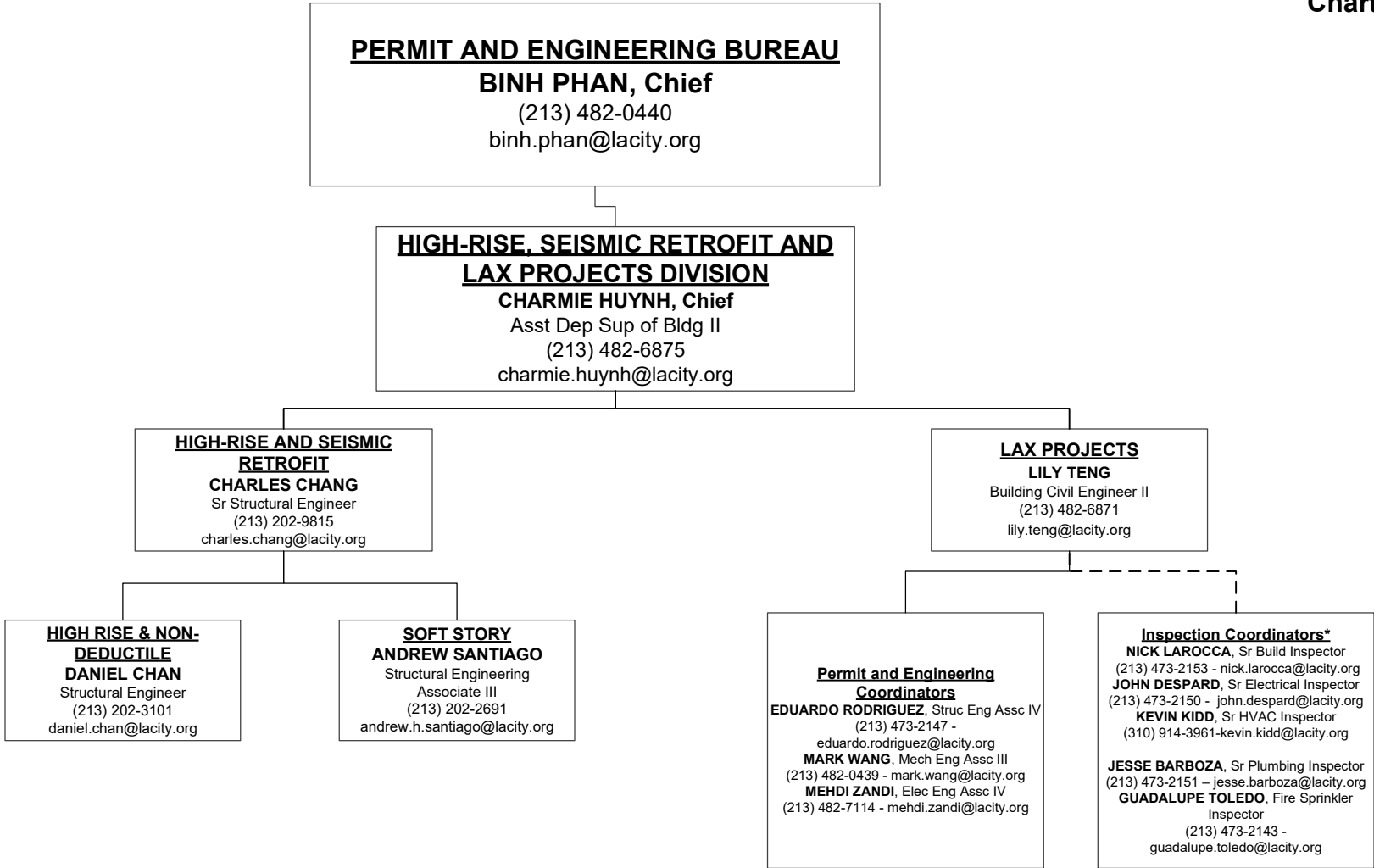
**STEVEN KIM**  
Bldg Civil Engr I  
(818) 374-4325  
steven.kim@lacity.org

**VACANT**  
Bldg Civil Engr I  
@lacity.org

**VAN NUYS STRUCTURAL PLAN CHECK**  
**NICKAN HEDAYAT**  
Bldg Civil Engr II  
(818) 374-4389  
omid.hedayat@lacity.org

**WEST LA STRUCTURAL PLAN CHECK**  
**CHI HARU SUZUKI**  
Bldg Civil Engr II  
(310) 575-8080  
chiharu.suzuki@lacity.org





\*Reporting to Inspection Bureau

**PERMIT AND ENGINEERING BUREAU**  
**BINH PHAN, Chief**  
 (213) 482-0440  
 binh.phan@lacity.org

**STRUCTURAL PLAN CHECK COUNTER DIVISION**  
**SHAHEN AKELYAN, Chief**  
 Asst Dep Sup of Bldg II  
 (213) 482-0440  
 shahen.akelyan@lacity.org

**METRO COUNTER PLAN CHECK**  
**SAI KHUM**  
 Bldg Civil Engr II  
 (213) 202-9927  
 sai.khum@lacity.org

**METRO COUNTER PLAN CHECK**  
**TOPHER KOMANCHECK**  
 Bldg Civil Engr II  
 (213) 482-0082  
 topher.komanchek@lacity.org

**VAN NUYS COUNTER PLAN CHECK**  
**FELIX FIGUEROA**  
 Bldg Civil Engr II  
 (818) 374-4386  
 felix.figueroa@lacity.org

**WEST LA**  
**REZA HAGHIGHAT**  
 Struc Engr Assc III  
 (310) 575-8025  
 reza.haghighat@lacity.org

**EXPRESS PERMITS, RECORDS & PLAN CHECK SUPPORT**  
**KATHLEEN RAYGOZA**  
 Chief Clerk  
 (213) 482-6847  
 kathleen.raygoza@lacity.org

**SOUTH LA OFFICE**  
**RICARDO RAMIREZ**  
 Struc Engr Assc II  
 (213) 482-9584  
 ricardo.x.ramirez@lacity.org

**SAN PEDRO OFFICE**  
**LAWRENCE QUIRANTE**  
 Struc Engr Assc III  
 (213) 482-0454  
 lawrence.quirante@lacity.org

**ARTIN ZARUKIAN**  
 Struc Engr Assc III  
 (818) 374-4382  
 artin.zarukian@lacity.org

**VAN NUYS RECORDS/ EXPRESS PERMITS COUNTER**  
**JON BLAINE**  
 Principal Clerk  
 (818) 374-7538  
 jon.blaine@lacity.org

**METRO EXPRESS PERMITS/ RECORDS COUNTER**  
**JENNY AYALA**  
 Principal Clerk  
 (213) 482-6851  
 jenny.ayala@lacity.org

**METRO STRUCTURAL PLAN CHECK, COUNTER, AND RESEARCH**  
**JEANNETTE MONTGOMERY**  
 Principal Clerk  
 (213) 482-0461  
 jeannette.montgomery@lacity.org

**METRO CONCIERGE SERVICES**  
**VACANT**  
 @lacity.org

**JEROME PALMA**  
 Struc Engr Assc III  
 (818) 374-4383  
 jerome.palma@lacity.org

**RECORDS COUNTER**  
**MICHELLE CORTEZ**  
 Sr Admin Clerk  
 (818) 374-9984  
 michelle.cortez@lacity.org

**METRO RECORDS COUNTER**  
**TERRY RAZO**  
 Sr Admin Clerk  
 (213) 482-6853  
 teresa.razo@lacity.org

**METRO STRUCTURAL COUNTER**  
**VACANT**  
 Sr Admin Clerk  
 @lacity.org

**EXPRESS COUNTER**  
**DANIEL LUERA SIERRA**  
 Sr Admin Clerk  
 (818) 374-4370  
 daniel.sierra@lacity.org

**SLA EXPRESS PERMITS**  
**VACANT**  
 Sr Admin Clerk  
 @lacity.org

**METRO STRUCTURAL PLAN CHECK**  
**JAZMIN OLMOS**  
 Sr Admin Clerk  
 (213) 482-7287  
 jazmin.olmos@lacity.org

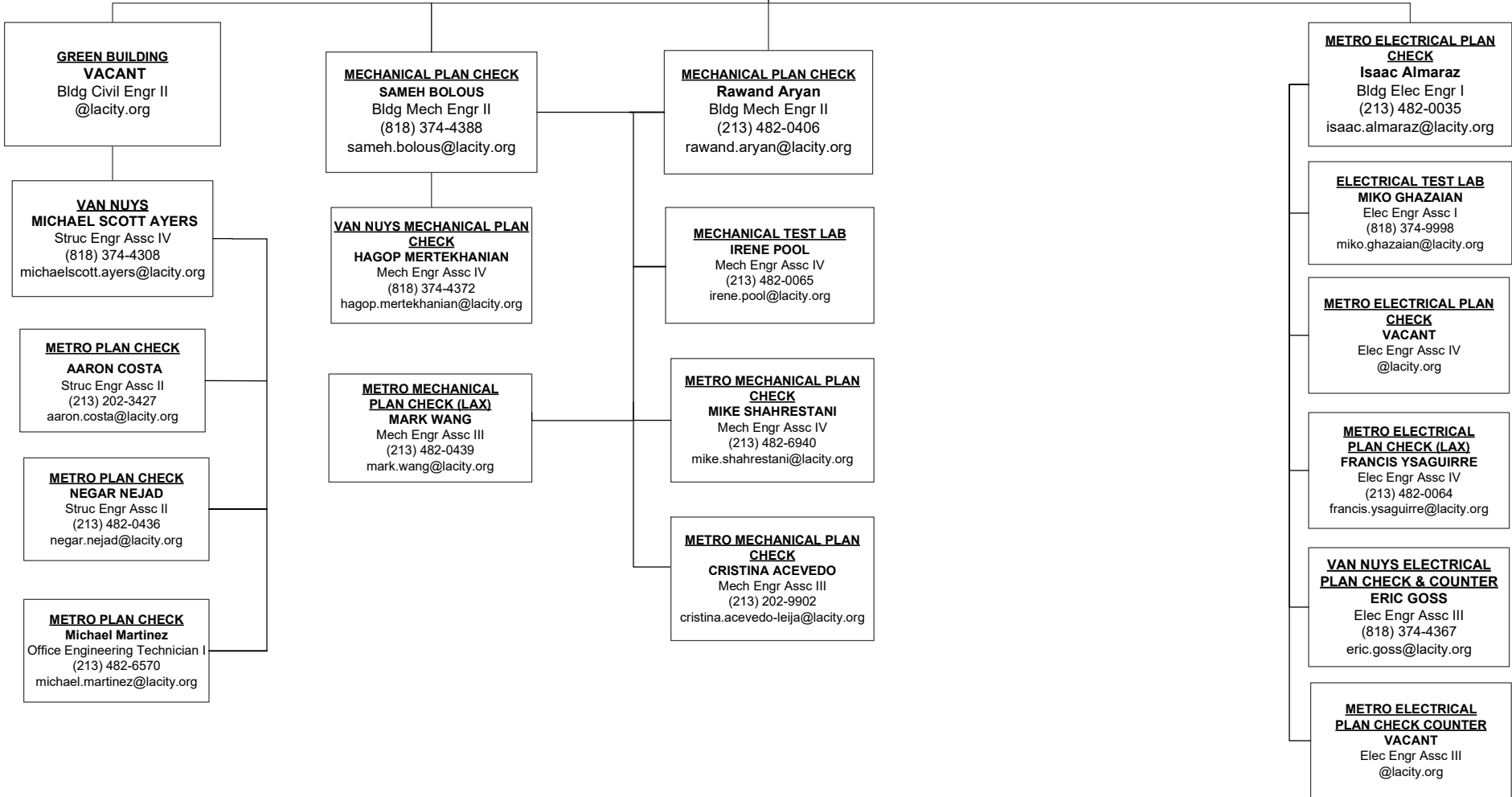
**METRO EXPRESS PERMITS**  
**OSCAR GOMEZ**  
 Sr Admin Clerk  
 (213) 482-6840  
 oscar.gomez@lacity.org

**SAN PEDRO EXPRESS PERMITS**  
**IDA MIRANDA**  
 Sr Admin Clerk  
 (310) 732-4568  
 ida.miranda@lacity.org

**WLA EXPRESS PERMITS**  
**KARENINA MORSHITA**  
 Sr Admin Clerk  
 (310) 575-8293  
 karenina.morshita@lacity.org

**PERMIT AND ENGINEERING BUREAU**  
**BINH PHAN, Chief**  
 (213) 482-0440  
 binh.phan@lacity.org

**GREEN, ELECTRICAL & MECHANICAL DIVISION**  
**ADEL SALAH EDDINE, Chief**  
 Asst Dep Sup of Bldg II  
 (213) 482-0053  
 adel.salah-eddine@lacity.org



**INSPECTION BUREAU**  
**PASCAL CHALLITA, Chief**  
 (213) 482-6712  
 pascal.challita@lacity.org  
**DENVER (SHAWN) HARGIS, Assistant Chief**  
 (213) 482-0342  
 denver.hargis@lacity.org

**KAITLIN MILLS**  
 Secretary  
 (213) 482-7212  
 kaitlin.mills@lacity.org

**BUILDING INSPECTION/INSPECTION CASE MANAGEMENT (ICM)/ RESTAURANT & SMALL BUSINESS EXPRESS PROGRAM (RSBEP)**  
**YERVAND CHAPANYAN**  
 Chief Inspector  
 (213) 482-0492  
 yervand.chapanyan@lacity.org

**TRADE LICENSING SECTION**  
**CRYSTAL HERNANDEZ**  
 Principal Clerk  
 (213) 482-0315  
 crystal.hernandez@lacity.org

**ELEVATOR/PRESSURE VESSEL INSPECTION**  
**VACANT**  
 Chief Inspector  
 @lacity.org

**INSPECTION CASE MANAGEMENT**  
**TED RIES**  
 Principle Inspector  
 (213) 202-9856  
 ted.ries@lacity.org

**BUILDING INSPECTION METRO**  
**ADAM BURGESS**  
 Principal Inspector  
 (213) 202-9856  
 adam.burgess@lacity.org

**RSBEP/ICM ADMIN SUPPORT**  
**TATIA WADE**  
 Administrative Clerk  
 (213) 482-0464  
 tatia.wade@lacity.org

**ELEVATOR INSPECTION**  
**LARRY ISIDRO**  
 Principal Inspector  
 (213) 202-9830  
 larry.isidro@lacity.org

**SPECIAL EVENTS/TENT INSPECTIONS**  
**FELIX CEBALLOS**  
 Sr Build Inspector  
 (213) 482-7359  
 felix.cebillos@lacity.org

**SOFT STORY INSPECTION**  
**WINSTON DUNNING**  
 Sr Build Inspector  
 (213) 482-0373  
 winston.dunning@lacity.org

**MATERIALS CONTROL**  
**KATY MARTINEZ RAMIREZ**  
 Sr Build Inspector  
 (213) 864-3849  
 katy.ramirez@lacity.org

**ELEVATOR INSPECTION METRO**  
**DAVID JENNINGS**  
 Sr Safety Eng Elev  
 (213) 202-9832  
 david.jennings@lacity.org

**PRESSURE VESSEL INSPECTION CODE DESK METRO**  
**JUAN CARLOS CHAVEZ**  
 Sr Safety Eng Press Ves  
 (213) 202-9852  
 juancarlos.chavez@lacity.org

**CERTIFIED LICENSED CONTRACTOR (CLC)/ CERTIFIED WELDERS**  
**DANIEL VARNAM**  
 Sr Build Inspector  
 (213) 804-0347  
 daniel.varnum@lacity.org

**BUILDING INSPECTION VAN NUYS**  
**RICKEY JACKSON**  
 Principal Inspector  
 (818) 374-1104  
 rickey.jackson@lacity.org

**ELEVATOR INSPECTION VN**  
**JIMMIE GRABATIN**  
 Sr Safety Eng Elev  
 (818) 374-1139  
 jim.grabatin@lacity.org

**PRESSURE VESSEL INSPECTION VN**  
**ALEXANDRE VASSILIEV**  
 Sr Safety Eng Press Ves  
 (213) 834-4653  
 alexandre.vassiliev@lacity.org

**BUILDING INSPECTION WEST LA**  
**HENRY BAGHDASSARIAN**  
 Principal Inspector  
 (310) 914-3905  
 henry.baghdassarian@lacity.org

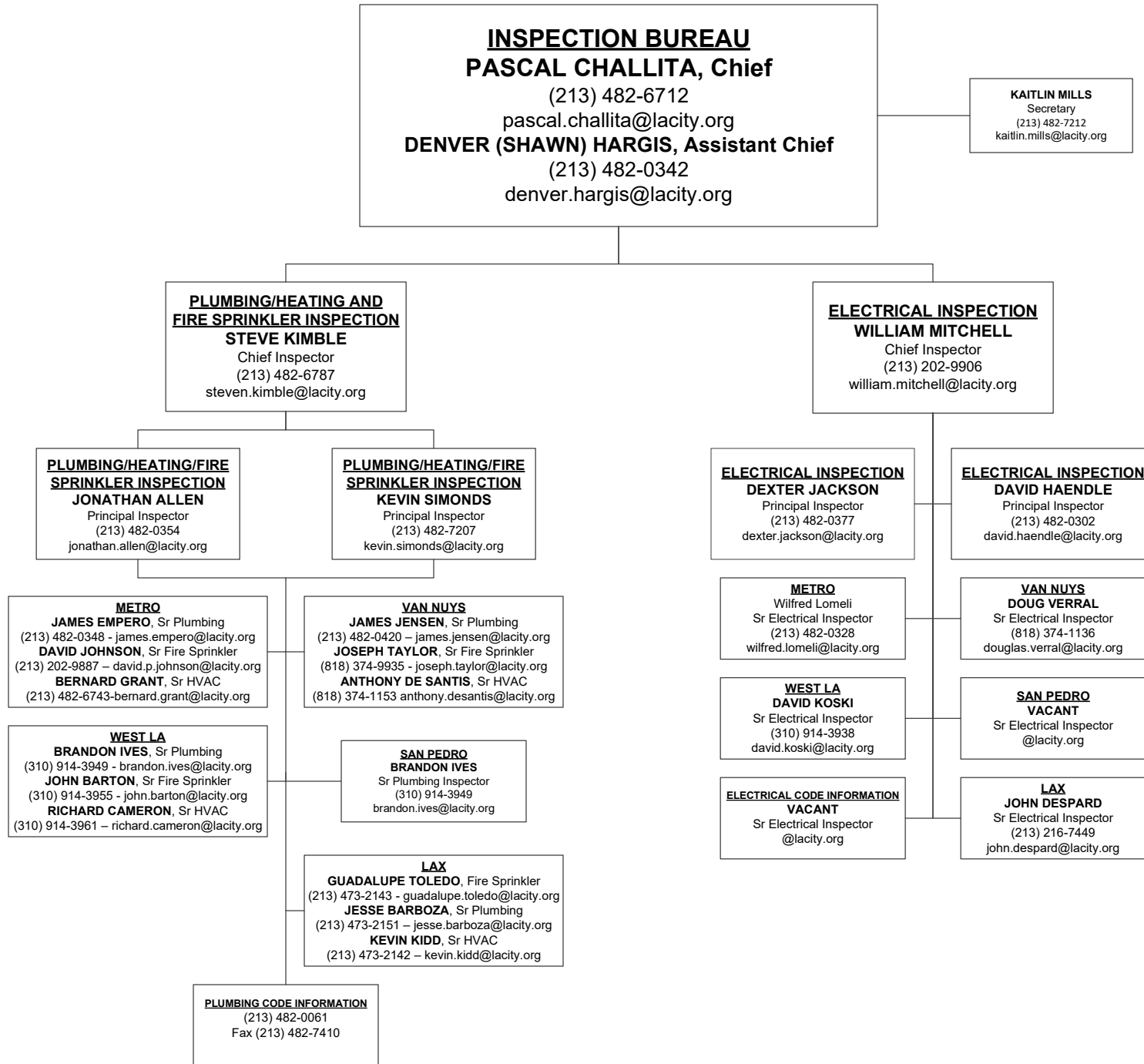
**ELEVATOR INSPECTION WLA**  
**VACANT**  
 Sr Safety Eng Elev  
 @lacity.org

**PRESSURE VESSEL INSPECTION WLA**  
**MANUEL VILLANUEVA**  
 Sr Safety Eng Press Ves  
 (213) 202-9845  
 manuel.villanueva@lacity.org

**BUILDING INSPECTION SAN PEDRO**  
**DAVID TSAU**  
 Sr Build Inspector  
 (213) 914-3917  
 david.tsau@lacity.org

**ELEVATOR CODE INFORMATION & APPOINTMENTS**  
 (213) 202-9844  
 Fax (213) 202-9922

**BUILDING INSPECTION LAX**  
**NICK LAROCCA**  
 Sr Build Inspector  
 (213) 923-6121  
 nick.larocca@lacity.org



**INSPECTION BUREAU**  
**PASCAL CHALLITA, Chief**  
 (213) 482-6712  
 pascal.challita@lacity.org  
**VICTOR CUEVAS, Assistant Chief**  
 (213) 202-9869  
 victor.cuevas@lacity.org

**KAITLIN MILLS**  
 Secretary  
 (213) 482-7212  
 kaitlin.mills@lacity.org

**RESIDENTIAL INSPECTION**  
**VACANT**  
 Chief Inspector  
 @lacity.org

**GRADING**  
**J. ADOLFO ACOSTA**  
 Geotechnical Engineer III  
 (213) 482-6967  
 jesus.acosta@lacity.org

**TRAINING AND EMERGENCY**  
**MANAGEMENT**  
**LISA YANCEY**  
 Chief Inspector  
 (213) 482-7097  
 lisa.yancey@lacity.org

**METRO/SAN PEDRO**  
**D. BRIAN HAUFF**  
 Principal Inspector  
 (213) 482-0323  
 derold.hauff@lacity.org

**VAN NUYS**  
**JOHN JANSON**  
 Principal Inspector  
 (818) 774-4335  
 john.janson@lacity.org

**WLA**  
**DANIEL ORRANTE**  
 Principal Inspector  
 (310) 914-3904  
 daniel.orrante@lacity.org

**GRADING INSPECTION**  
**SERGIO VALENZUELA**  
 Principal Inspector  
 (213) 482-0397  
 sergio.valenzuela@lacity.org

**GEOTECHNICAL**  
**ENGINEERING**  
**YING LIU**  
 Geotechnical Engineer II  
 (213) 482-0494  
 ying.liu@lacity.org

**ARMOND GREGORYONA**  
 Principal Inspector  
 (213) 482-7370  
 armond.gregoryona@lacity.org

**TRAINING**

**EMERG MGMT**

**CD #5C, 10, & #13**  
**RUBEN SALAS**  
 Sr Build Mech Inspector  
 (213) 482-6962  
 ruben.salas@lacity.org

**CD #12**  
 19040 Vanowen St.  
**VACANT**  
 Sr Build Mech Inspector  
 @lacity.org

**CD #5A**  
 11620 Wilshire Blvd. #1100  
**MICHAEL PELHAM**  
 Sr Build Mech Inspector  
 (310) 914-3908  
 michael.pelham@lacity.org

**METRO**  
**MICHAEL TEMPLE**  
 Sr Build Inspector  
 213-482-0396  
 michael.temple@lacity.org

**GRADING PLAN CHECK**  
**DAN RYAN EVANGELISTA**  
 Struc Engr Assc III  
 (213) 482-6810  
 dan.evangelista@lacity.org

**ELECTRICAL**  
**MATTHEW COTTER**  
 Sr Electrical Inspector  
 (213) 482-6797  
 matthew.cotter@lacity.org

**VACANT**  
 Emergency Management  
 Coordinator  
 @lacity.org

**VACANT**  
 Sr Build Mech Inspector  
 @lacity.org

**CD #7**  
 6262 Van Nuys Blvd  
**ROBERT GOLD**  
 Sr Build Mech Inspector  
 (818) 374-1158  
 robert.gold@lacity.org

**CD #11**  
 11620 Wilshire Blvd. #1100  
**KENNETH NAGLE**  
 Sr Build Mech Inspector  
 (310) 914-3906  
 kenneth.nagle@lacity.org

**WEST LA INSPECTION**  
**VASIL MIHALEV**  
 Sr Build Inspector  
 (310) 914-3934  
 vasil.mihalev@lacity.org

**ENGINEERING GEOLOGY**  
**DANIEL SCHNEIDERREIT**  
 Engineering Geologist II  
 (213) 482-0430  
 daniel.schneiderreit@lacity.org

**HVAC**  
**KEVIN BROWN**  
 Build Mech Inspector  
 (213) 482-6795  
 kevin.brown@lacity.org

**ED GARCIA**  
 Sr Build Mech Inspector  
 (213) 482-6786  
 edward.garcia@lacity.org

**CD #1 & #14**  
 221 N. Figueroa, 8th Fl.  
**CHARLES BOGHOSKHAN**  
 Sr Build Mech Inspector  
 (213) 202-3445  
 charles.boghoskhan@lacity.org

**CD #5B**  
 6262 Van Nuys Blvd.  
**VACANT**  
 Sr Build Mech Inspector  
 @lacity.org

**CD #5D**  
 11620 Wilshire Blvd. #1100  
**VACANT**  
 Sr Build Mech Inspector  
 @lacity.org

**VAN NUYS INSPECTION**  
**CHARLES POWELL**  
 Sr Build Inspector  
 (818) 374-4355  
 charles.powell@lacity.org

**BUILDING**  
**JOHN DODGE**  
 Sr Build Inspector  
 (213) 326-9546  
 john.dodge@lacity.org

**METRO/VN/WLA/SP**  
**INVESTIGATIONS**  
**VACANT**  
 Sr Build Inspector  
 @lacity.org

**CD #8 & #9**  
 221 N. Figueroa, 8th Fl.  
**HAL FULTZ**  
 Sr Build Mech Inspector  
 (818) 374-9823  
 hal.fultz@lacity.org

**TRACTS**  
 19040 Vanowen St  
**SEAN WIRCH**  
 Sr Build Mech Inspector  
 (818) 774-4354  
 sean.wirch@lacity.org

**CD #6**  
 11620 Wilshire Blvd. #1100  
**RICHARD STEINBACH**  
 Sr Build Mech Inspector  
 (310) 914-3909  
 richard.steinbach@lacity.org

**SAN PEDRO INSPECTION**  
**VASIL MIHALEV**  
 Sr Building Inspector  
 (310) 914-3934  
 vasil.mihalev@lacity.org

**PLUMBING**  
**ARMANDO PULIDO**  
 Sr Plumbing Inspector  
 (213) 482-0346  
 armando.pulido@lacity.org

**HIGH RISE RETROFIT/**  
**EQ INSPECTION**  
**VACANT**  
 Sr Build Inspector  
 @lacity.org

**CD #4**  
 221 N. Figueroa, 8th Fl.  
**CRAIG DAVIS**  
 Sr Build Mech Inspector  
 (213) 202-3261  
 craig.davis@lacity.org

**METRO TRACTS**  
**SCOTT FINNILA**  
 Sr Build Mech Inspector  
 (213) 482-0384  
 scott.finnila@lacity.org

**CD #2**  
 6262 Van Nuys Blvd  
**DAVE MATSON**  
 Sr Build Mech Inspector  
 (818) 374-1159  
 dave.matson@lacity.org

**RESIDENTIAL/ZONING**  
**ANDREW NAVE**  
 Build Mech Inspector  
 (213) 482-7278  
 andrew.nave@lacity.org

**INVESTIGATIONS**  
**LINN MELVIN**  
 Build Mech Inspector  
 (213) 482-0371  
 trey.melvin@lacity.org

**CD #15**  
 638 S. Beacon St.  
**DONALD CRICHLLOW**  
 Sr Build Mech Inspector  
 (213) 202-3431  
 donald.crichlow@lacity.org

**CD #3**  
 19040 Vanowen St.  
**SEAN WIRCH**  
 Sr Build Mech Inspector  
 (818) 774-4354  
 sean.wirch@lacity.org

**TRAINING COORDINATOR**  
**VACANT**  
 Management Analyst  
 @lacity.org

**CODE ENFORCEMENT BUREAU**  
**CATHERINE NUEZCA-GABA, Chief**

(213) 252-3931  
 catherine.nuezcagaba@lacity.org  
**ERIC JAKEMAN, Assistant Chief**  
 (213) 252-3976  
 eric.jakeman@lacity.org

**FAITH MAULUPE**  
 Principal Clerk  
 (213) 252-3376  
 faith.maulupe@lacity.org

**GENERAL ENFORCEMENT & SPECIALTY/SIGNS INSPECTION**

**JEFF NAPIER**  
 Chief Inspector  
 (213) 263-6846  
 jeff.napier@lacity.org

**GENERAL ENFORCEMENT, ANNUAL INSPECTION MONITORING, PROACTIVE CODE ENFORCEMENT, & VACANT BUILDING ABATEMENT**

**JACK CONGER**  
 Chief Inspector  
 (213) 252-3310  
 jack.conger@lacity.org

**CITYWIDE SIGNS**  
**DANIEL SANCHEZ**  
 Principal Inspector  
 (213) 252-3926  
 daniel.sanchez@lacity.org

**CENTRAL REGION GENERAL ENFORCEMENT**  
**DANIEL SANCHEZ**  
 Principal Inspector  
 (213) 252-3926  
 daniel.sanchez@lacity.org

**SOUTH REGION GENERAL ENFORCEMENT**  
**CLAUDIO MORENO**  
 (213) 978-4502  
 Principal Inspector  
 claudio.moreno@lacity.org

**CITYWIDE ANNUAL INSPECTION MONITORING**  
**DAVID JAMES**  
 Principal Inspector  
 (818) 374-9806  
 dave.james@lacity.org

**NORTH REGION GENERAL ENFORCEMENT (CODE)**  
**DAVID JAMES**  
 Principal Inspector  
 (818) 374-9806  
 dave.james@lacity.org

**CITYWIDE PACE 2 & 3**  
**SHAWN ESHBACH**  
 Principal Inspector  
 (213) 252-3962  
 shawn.eshbach@lacity.org

**CITYWIDE VBA & FORECLOSURE REGISTRY PROGRAM**  
**SHAWN ESHBACH**  
 Principal Inspector  
 (213) 252-3962  
 shawn.eshbach@lacity.org

**SIGN ENFORCEMENT**  
**MICAH WILLIAMS**  
 Sr Build Mech Inspector  
 (213) 252-3087  
 micah.williams@lacity.org

**CD #1**  
**ROBERT MINASSIANS**  
 Sr Build Mech Inspector  
 (213) 252-3038  
 robert.minassians@lacity.org

**CD #8**  
**JAVIER RAMOS**  
 Sr Build Mech Inspector  
 (213) 978-4504  
 javier.ramos@lacity.org

**NORTH REGION WILLIE ROSS**  
 Sr Build Mech Inspector  
 (818) 374-9837  
 willie.ross@lacity.org

**CD #2**  
**DAVID HICKMAN**  
 Sr Build Mech Inspector  
 (818) 230-0288  
 david.hickman@lacity.org

**PRO-ACTIVE CODE ENFORCEMENT 2**  
**JASON SUMMERS**  
 Sr Build Mech Inspector  
 (213) 252-3349  
 jason.summers@lacity.org

**VACANT BUILDING ABATEMENT**  
**HAGOP BADOSSIAN**  
 Sr Build Mech Inspector  
 (213) 252-3902  
 hagop.badossian@lacity.org

**NEW CONSTRUCTION**  
**MICAH WILLIAMS**  
 Sr Build Mech Inspector  
 (213) 252-3087  
 micah.williams@lacity.org

**CD #4**  
**MARK FERARRI**  
 Sr Build Mech Inspector  
 (213) 482-0469  
 mark.ferarri@lacity.org

**CD #9**  
**DANIEL GONZALEZ**  
 Sr Build Mech Inspector  
 (213) 978-4495  
 daniel.a.gonzalez@lacity.org

**METRO REGION BEHROUZ HASHEMI**  
 Sr Build Inspector  
 (213) 252-3041  
 behrouz.hashemi@lacity.org

**CD #3**  
**JEFF DIFIORE**  
 Sr Build Mech Inspector  
 (818) 374-9857  
 jeffrey.difiore@lacity.org

**PRO-ACTIVE CODE ENFORCEMENT 3**  
**PATRICK LIEBREGT**  
 Sr Build Mech Inspector  
 (213) 252-3962  
 patrick.liebregt@lacity.org

**OFF-SITE SIGNS PERIODIC INSPECTION PROGRAM**  
**MICAH WILLIAMS**  
 Sr Build Mech Inspector  
 (213) 252-3087  
 micah.williams@lacity.org

**CD #5**  
**ROBERT CHAVEZ**  
 Sr Build Mech Inspector  
 (213) 252-3049  
 robert.chavez@lacity.org

**CD #10**  
**DONALD WONG**  
 Sr Build Mech Inspector  
 (213) 252-3964  
 donald.wong@lacity.org

**CD #6**  
**CHRIS LEKO**  
 Sr Build Mech Inspector  
 (818) 374-9858  
 christopher.leko@lacity.org

**ADAPTIVE RESPONSE UNIT**  
**MARK RUDE**  
 Sr Build Mech Inspector  
 (213) 925-3551  
 mark.rude@lacity.org

**CD #13**  
**MARK BEVELAQUA**  
 Sr Build Mech Inspector  
 (213) 252-3977  
 mark.bevelaqua@lacity.org

**CD #11**  
**JOHN MATTILLO**  
 Sr Build Mech Inspector  
 (213) 978-4498  
 john.mattillo@lacity.org

**CD #7**  
**MARK VAN SLOOTEN**  
 Sr Build Mech Inspector  
 (818) 374-9820  
 mark.vanslooten@lacity.org

**CD #14**  
**AUGUSTUS ALBAS**  
 Sr Build Mech Inspector  
 (323) 526-9348  
 augustus.albas@lacity.org

**CD #15**  
**VACANT**  
 Sr Build Mech Inspector  
 @lacity.org

**CD #12**  
**PIERRE VEGA**  
 Sr Build Mech Inspector  
 (818) 374-9853  
 pierre.vega@lacity.org

**LEGAL LIAISON**  
**DA LIU**  
 Sr Build Mech Inspector  
 (213) 252-3393  
 da.liu@lacity.org

**LEGAL LIAISON**  
**VACANT**  
 Sr Build Mech Inspector  
 @lacity.org

**LEGAL LIAISON**  
**ALFREDO FLORES**  
 Sr Build Mech Inspector  
 (818) 374-9859  
 alfredo.flores@lacity.org

**CODE ENFORCEMENT BUREAU**  
**CATHERINE NUEZCA-GABA, Chief**  
(213) 252-3931  
catherine.nuezcagaba@lacity.org  
**ERIC JAKEMAN, Assistant Chief**  
(213) 252-3976  
eric.jakeman@lacity.org

**ENVIRONMENTAL AFFAIRS DIVISION**  
**LOCAL ENFORCEMENT AGENCY**  
**DAVID THOMPSON**  
Environmental Affairs Officer  
(213) 252-3932  
david.thompson@lacity.org

**NORTH REGION**  
**JOSE GUTIERREZ**  
Environmental Supervisor II  
(213) 252-3348  
jose.gutierrez@lacity.org

**SOUTH REGION**  
**MEGAN LEE**  
Environmental Supervisor I  
(213) 252-3344  
megan.lee@lacity.org

**HEALTH, SAFETY & ADMINISTRATION**  
**ANDY KAO**  
Industrial Hygienist  
(213) 252-3967  
andy.kao@lacity.org



**RESOURCE MANAGEMENT BUREAU**  
**ANA MAE YUTAN, Chief**  
 (213) 482-6703  
 anamae.yutan@lacity.org

**TONY PELAEZ**  
 Acting Chief Mgmt Analyst  
 (213) 482-6766  
 tony.pelaez@lacity.org

**EMILY PINEDA**  
 Administrative Clerk  
 emily.pineda@lacity.org

**CHERYL HASS**  
 Assistant Bureau Chief  
 Dept Chief Accountant  
 (213) 482-7318  
 cheryl.hass@lacity.org

**BUDGET & GENERAL ADMINISTRATIVE SERVICES DIVISION**

**CONTRACTS AND SUPPORT SERVICES DIVISION**

**RECORDS MANAGEMENT DIVISION**

**FINANCIAL SERVICES DIVISION**

**JASON VALENCIA**  
 Sr Mgmt Analyst II  
 (213) 216-1193  
 jason.valencia@lacity.org

**TIFFANY BALTAZAR**  
 Sr Mgmt Analyst II  
 (213) 482-6776  
 tiffany.baltazar@lacity.org

**CHAUNTEL MARTIN**  
 Management Analyst  
 (213) 482-6560  
 chauntel.martin@lacity.org

**EMMA PANGILINAN**  
 Principal Accountant I  
 (213) 482-6802  
 emma.pangilinan@lacity.org

**JEREMY CORONEL**  
 Principal Accountant I  
 (213) 482-7347  
 jeremy.coronel@lacity.org

**BUDGET & GENERAL ADMINISTRATIVE SERVICES MAIN LINE**  
 LADBS.ASD@lacity.org

**CUSTODIAN OF RECORDS**  
 VACANT  
 ladbs.custodianofrecords@lacity.org

**ANSINEE TOWNSEND**  
 Principal Clerk  
 (213) 482-7345  
 ansinee.townsend@lacity.org

**LIENS AGNES SONDERVAN-ROSENFELD**  
 Management Analyst  
 (213) 482-6528  
 agnes.sondervan-rosenfeld@lacity.org

**ACCOUNTING LEO CANTIMBUHAN**  
 Sr Accountant I  
 (213) 482-6817  
 leo.cantimbuhan@lacity.org

**ACCOUNTS PAYABLE EMILY HU**  
 Sr Accountant II  
 (213) 482-6534  
 emily.hu@lacity.org

**ACCOUNTS RECEIVABLE**  
 VACANT  
 Sr Accountant II  
 (213)XXX-XXXX@lacity.org

**INTERNET DOCUMENT IMAGING SYSTEM**  
**JOSHUA BLANCHER**  
 Sr Admin Clerk  
 (213) 482-7143  
 joshua.blancher@lacity.org  
  
**EUSA VALDEZ**  
 Sr Admin Clerk  
 (213) 482-6885  
 eusa.valdez@lacity.org

**RESIDENTIAL PROPERTY REPORTS**  
**SUNEETA ATYAM**  
 Sr Admin Clerk  
 (213) 482-6772  
 suneeta.atyam@lacity.org

**SUPPLIES JOHN BOROUGH**  
 Store Keeper II  
 (213) 482-6813  
 john.borough@lacity.org

**SUBJECT SPECIALTY CALL GROUP**  
**LORENA ESPINOZA**  
 Sr Admin Clerk  
 (213) 482-6549  
 lorena.espinoza@lacity.org

**ADMINISTRATIVE SERVICES SUPPORT**  
**APRIL DOUGLASS-LAWSON**  
 Sr Admin Clerk  
 (213) 482-6710  
 april.douglass-lawson@lacity.org

**PAYROLL ANDREW BYRNE**  
 Payroll Supervisor  
 (213) 482-6538  
 andrew.byrne@lacity.org

**CASHIERING SERVICES VICTORIA VASQUEZ**  
 Chief Cashier  
 (213) 482-6953  
 mariavictoria.vasquez@lacity.org

**TECHNOLOGY SERVICES BUREAU**  
**VACANT, Chief**  
 @lacity.org  
**GREG WILCOX, Director of Systems**  
 (213) 274-3449  
 greg.wilcox@lacity.org

